

Determining “Exposure”

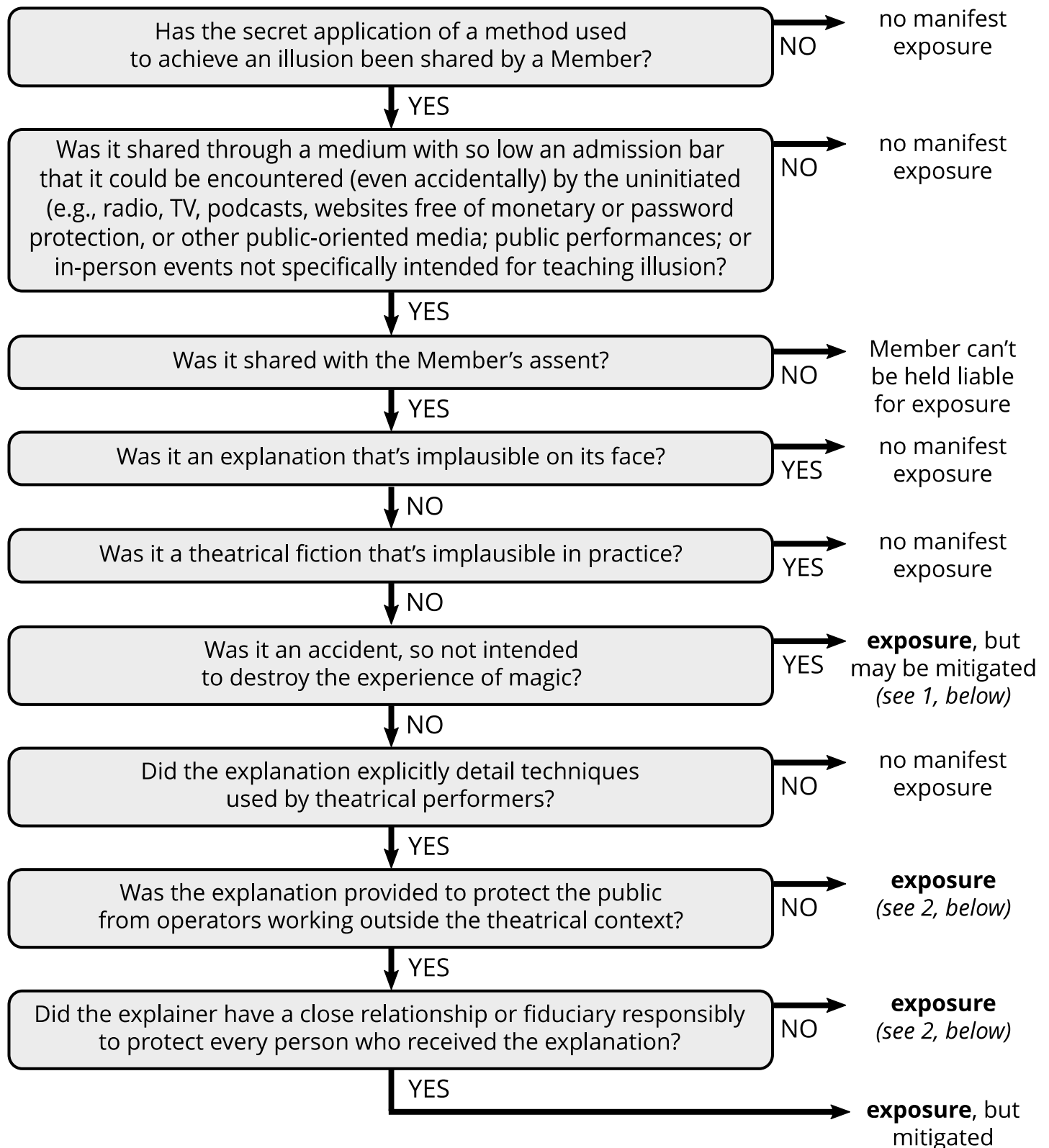
A Nominal Evaluation Flowchart For the Application of the P.E.A.’s “Policy on Exposure”

It is important to appreciate that the flowchart presented on the following page is intended as a convenient tool to assist the P.E.A. Board of Directors in adjudicating exposure claims brought against a Member.

It is in no way a substitute for the **actual** definitions and explanations provided in the concomitant document, “What Constitutes ‘Exposure’”.

Blindly following the flowchart without an in-depth understanding of the underlying details is strongly discouraged and may lead to erroneous conclusions.

Exposure: A Nominal Evaluation Flowchart



1. Consider whether there is a pattern of infraction, and determine where this occurrence lies, on a range from once (negligible) to frequently (needs guidance).
2. Consider the magnitude of the infraction, such as how much information was revealed and the number of uninitiated participants affected.